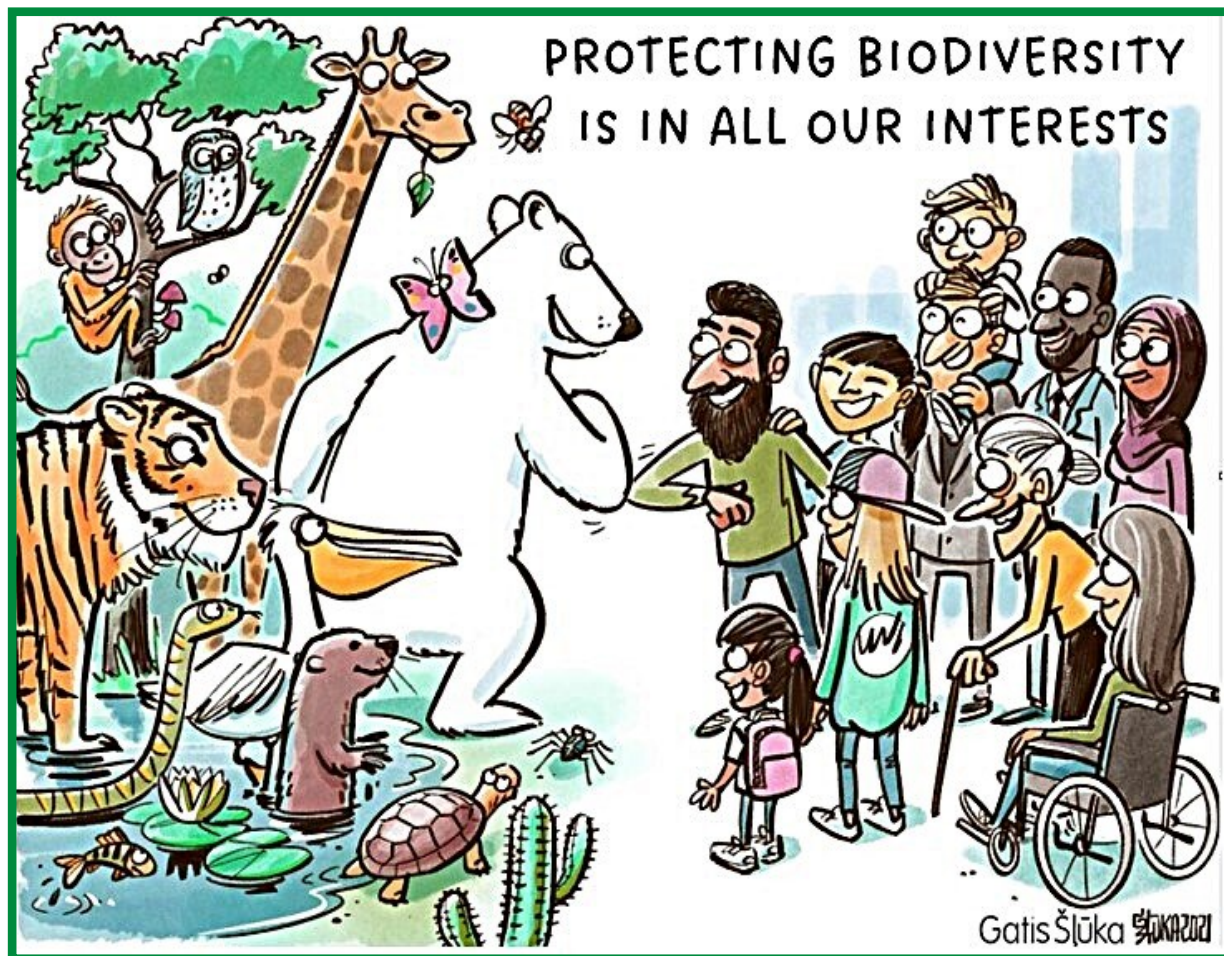


RE+B MAGAZINE

Raising awareness
of sustainable practices

Winter 2022 Issue #2



In this Issue

Key Dates for Your Calendar p2

Betchworth B-Line : Creating Mini Wildflower Meadows p4

Caring for Our Water p5-7

We Love Our Jubilee & Apple Trees p8

Escalating Energy Costs: Investing to keep them in check p9

Winter Gallery p11

Key Dates for Your Calendar

Forest School Programme

Following the success of the taster days last summer, Re-Betchworth are now able to offer Forest School as a monthly event in a wonderful local woodland. All sessions will be run by a qualified teacher and Forest School leader and are open to 5-10 year children from Betchworth and our surrounding villages.

Starting on 4 March, and then on the first Saturday for the next four months: 1 April, 6 May, 3 June and 1 July. Village children £10 per session, or £40 for the programme.

Book or find out more by contacting Clair Cobbold: claircaxton@hotmail.com or 07799 305 378.

Other important dates

| | |
|---|--|
| 8 February 7.00pm Zoom talk | Creating mini wildflower meadows for pollinators Guest speaker: Louis Harrington-Edmans, Space4Nature Conservation Officer at Buglife, and one of the architects of the UK B-Line project. No charge, but please register with rebetchworth@gmail.com |
| 20 February 7.30pm Brockham Village Hall | Keeping Bees Karen and Becki from Dorking Beekeepers lead this talk on the fascinating life of bees, organised by Brockham Green Horticultural Society (for Betchworth, Buckland and Brockham) |
| 10 March 10.00-1.00pm Workshop | Mature Apple Tree Pruning Demo & Practice Tutor: Alessandra Valsecchi (ex RHS Wisley) Suggested fee: £10 for villagers. Book now at rebetchworth@gmail.com |
| 23 March 7.00pm Zoom talk | Rainwater Gardening Guest Speaker: Janet Manning (ex RHS Wisley) No charge, but please register with rebetchworth@gmail.com |
| 26 April 7.00pm Zoom talk | Wild Water, Ponds and Pond Making Guest speaker: tba |
| 7 October | Apple Press Day — at Betchworth Village Hall Not to be missed! Mark it in your diary now. |

rebetchworth@gmail.com

Editor

Welcome to the second issue this digital magazine from the RE-Betchworth Action for Nature & Sustainability Charity, whose aim is to encourage awareness and habits that will lead to a more sustainable future for the Earth and all the life it supports.

In the wake of the recent COP15 Biodiversity Conference, this issue has a biodiversity theme. Our cover image by Latvian cartoonist Gatis Šļūka, captures the underlying message that if humanity works to protect and encourage biodiversity, the whole Earth and all forms of life will benefit.

We hope you enjoy this selection of articles based on the work we are doing or planning to do, and we welcome your feedback and suggestions for future articles. If you would like to contribute an article, please get in touch with the Editors James Benn & Norman Jackson rebetchworth@gmail.com

Working with you in 2023

2022 was the year Re-Betchworth really got going. With encouragement and a generous grant from the Parish Council we launched the Forest School, produced 11 nature movies and established a YouTube channel, began work on the Village Orchard, held our first communal Apple Press day and secured commitment to plant 70 trees to mark the late Queen's Jubilee. And we expanded our team and our capacity to support what is now a Charitable Incorporated Organisation.

We could not have achieved these things without your involvement and support, and we are looking forward to working with you again this year on projects that relate to our charitable mission, including:

- **Caring for our Insect Pollinators and Wildflowers** through our B-Line mini wildflower meadow project - We'll be working to establish a pollinator-friendly north-south corridor of wildflower-rich areas to fit in with the UK-wide B-Line project, a Buglife initiative [national conservation trust] ([page 4](#))
- **Caring for Our Water**—our local waterways, renovating existing and establishing new ponds and helping villagers prepare their gardens and homes for permanently drier summers ([see pages 5 - 7](#))
- **Continuing to Care for Our Trees**— completing and documenting our Jubilee Tree planting project and continuing work to make our village orchard more productive ([see page 8](#))
- **Expanding our Programme of Forest School Activities** ([see page 2](#))

Read more about these on following pages and get involved now by booking into some of the events set up to back these projects.



Pollination & Pollinators

Pollination is one of the most important biological processes on our planet and bees are one of the most important pollinators. Pollination is the transfer of the pollen grain from the stamen (the male part of the flower) to the stigma and egg (the female part of the flower). It is through pollination that plants are fertilised and able to produce the next generation of plants, including the fruit and crops we eat. Around 75% of crop plants require some degree of animal pollination, including many of our everyday fruit and vegetables. Of all the different animals and insects that serve as pollinators, the most important are bees and this year we are attempting to help them a little through our B-Line project ([page 4](#)).

Betchworth B-Line : Creating Mini Wildflower Meadows for Pollinators



There is a serious decline in insect pollinators & wildflower habitats. Since the 1950s we have witnessed a rapid decline in the populations of pollinating insects and the area of wildflower meadows.

B-Lines are an emerging, nation-wide solution to reverse pollinator decline. They are a network of 3km wide 'insect pathways' running through our countryside and towns, along which wildflower-rich habitat are being restored and created as stepping stones. They link existing wildlife areas together, creating a network, like a railway, that will weave across the British landscape.

Betchworth is ideally placed to support this important biodiversity project. The Coombe lies within the Surrey Hills B-Line, whose southern boundary runs through Betchworth Station. Furthermore, we already have a wildflower strip on the village green and many residents cultivate flowers, shrubs and fruit trees that nourish insect pollinators.

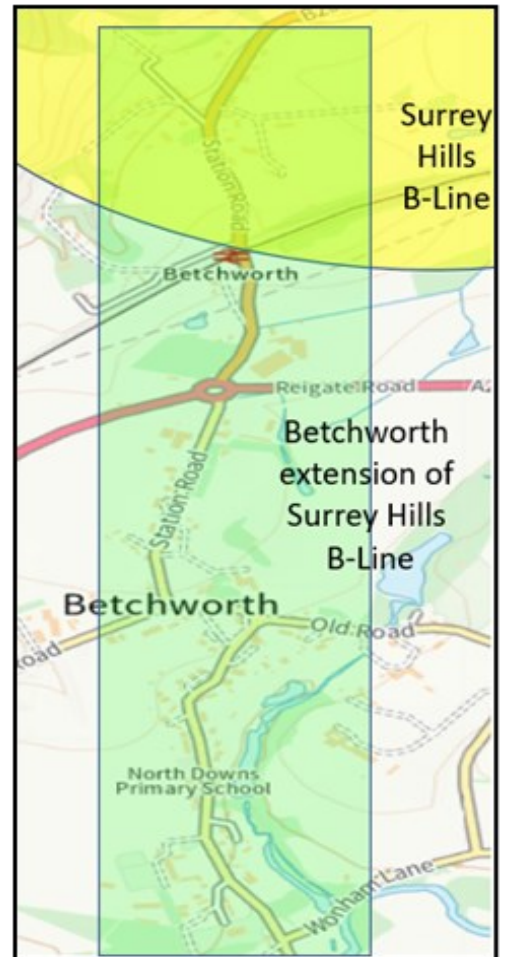
But we can do more. With your help we aim to cultivate a patchwork of new mini wildflower meadows to attract pollinators throughout the village and establish a north-south extension of the Surrey Hills B-Line down to the River Mole.

Our aim is to contribute to a UK-wide biodiversity project by:

1. Finding residents who are willing to cultivate a mini wildflower meadow (whether a large container, or a few square metres or more of garden).
2. Encouraging and helping those residents, by providing advice and wildflower seeds.
3. Recording the impact of everyone's work, and sharing the story of how we extended the B-Line, created a patchwork of mini wildflower meadows and helped pollinating insects.

One of the architects of the B-Line network, Louis Harrington-Edmans, Space4Nature Conservation Officer at Buglife – The Invertebrate Conservation Trust, is assisting us with advice on appropriate wildflower seed mixes and some financial support for buying seeds. He is helping us launch our project through a community Zoom meeting on 8 February (See diary dates on page 2)

While our initial focus will be in north Betchworth, we invite all Betchworth residents to join this community project by cultivating your own mini wildflower meadow. To become a 'B-Liner' please get in touch with RE-Betchworth member Norman Jackson lifewider@gmail.com. And do join our Zoom meeting on 8 February.

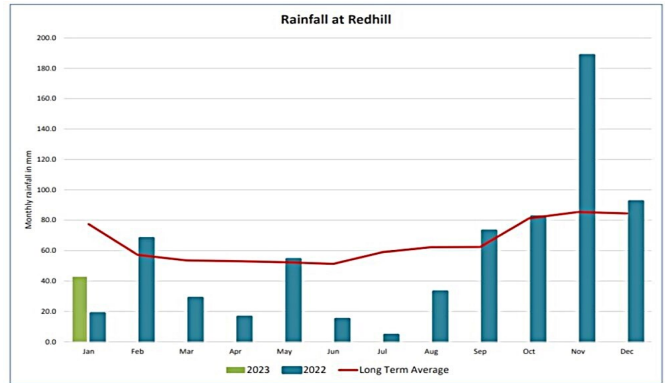


There is more information about the project at <https://rebetchworth.weebly.com/wildflowers.html>

Re-B 'Caring for Our Water'

In the UK we are fortunate to live in a climate with plenty of rain, but this summer we had a taste of what it must be like to live with very little rainfall; anyone with garden or allotment will know how hard it was to keep plants alive. Thankfully we have had plenty of rain since September.

It was during our hot dry summer that the two strands of RE-B's 'Caring for Our Water' project were born: our 'domestic' water piped to us by SES, and the 'wild' water from rainfall. More detailed information about both strands can be found on <https://rebetchworth.weebly.com/water.html>



Domestic water and preparing for the next dry summer

Deb is leading the 'domestic' water strand of our project with the goal to raise awareness of the need to care for our water, and to encourage more efficient use in our home and gardens.

We launched this strand with an excellent talk by Rob Baldry, Water Quality Science Manager at Sutton and East Surrey Water (SES) which provide us with the clean, safe and wholesome water that comes out of our taps. Rob's talk covered where we get our water from, how it is treated, how it gets to us and how we, as consumers, can be more efficient in our use in the home. You can watch it here <https://www.youtube.com/watch?v=0WRqOSfNko>

In summary, we all need to take action on three fronts to reduce extraction from aquifers and reservoirs: 1) use less water; 2) collect, store and use as much rain and grey water as possible (instead of mains water), particularly on gardens and allotments; and 3) to making whatever land surrounds our houses as water permeable as possible.

We appreciate that not everyone can do this, for access, physical capability, technical and/or cost reasons. But if caring for the natural world means anything then those of us who can should do so.

Either way, do join our 23 March Zoom Meeting when we will focus on what we might do to **prepare for the next dry summer** by using water more effectively in our gardens and allotments. Our Guest Speaker is Janet Manning who was RHS Wiseley's first Garden Water Scientist. During a 3-year research project with Cranfield University she created a wealth of science-based guidance and resources to support more effective use of rainwater (see <https://rebetchworth.weebly.com/mains-to-rains.html>).

We hope that the RE-Betchworth charity will be able to financially support the installation of a number of water butts across the parish. To find out more please join the Zoom talk and contribute to the conversation by letting Deb know about the ways in which you manage to save or reuse your water. coombecott@hotmail.co.uk

Top tips for saving water all year round

Make it as easy as possible for people to make positive lifestyle changes with these top tips for using less water. Use these to inform your messaging or as conversation starters at your event.

- Shorten your shower, aim for 4 minutes
- Air your clothes rather than washing if they're not dirty
- Turn the tap off when brushing your teeth
- Use a bowl or a plug when washing up
- Use the dual flush - the little button for a wee
- Visit seswater.aqkwa.co.uk for free water saving products
- Share a flush when you can (if it's yellow let it mellow, if it's brown flush it down)
- Wait until you have a full load before doing the laundry, and use the eco setting if available
- Choose drought tolerant plants that need less watering - look out for the sun label

Re-B 'Caring for Our Water'

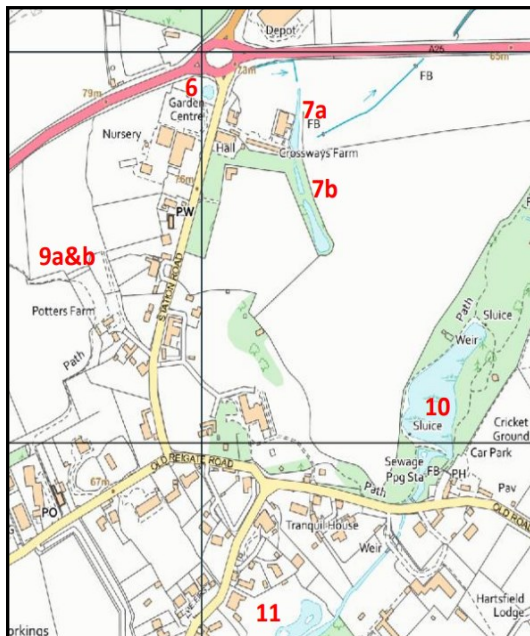
Wild Water: Ponds, lakes and watercourses

The second strand of our project, led by Norman, is concerned with our *wild water* - the rain and what happens to it as it moves into and through the ground, gathers in ponds and lakes or travels along watercourses, drainage channels and brooks to the River Mole.

We have an environmental duty of care to limit pollution, to harvest and store our water and encourage it to soak into the ground and eventually find its way unpolluted to the aquifers and river.

Mapping our natural resources

To start, we wanted to better understand these surface water resources, so over the last few months the RE-B team has undertaken a survey of the ponds and lakes of the Betchworth and



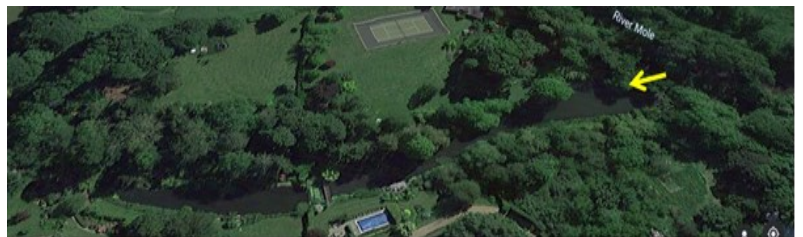
Buckland Parishes. Ponds and lakes were identified on 1:10,000 scale OS Maps printed at poster size. Remote sensing imagery was also used to verify and refine water-based features including Google Earth, Bing Landsat and LIDAR. Older OS Maps including the 1875 25" to 1 mile and 1890-1913 OS series maps. This allows for ancient ponds and waterways to be distinguished from modern ponds and enables a historical perspective to be gained on some of our waterways. Where possible water features were verified on the ground and a photographic database was constructed.

The full report is available at <https://rebetworth.weebly.com/water.html> It is in two parts: Part 1 contains an inventory of the ponds and lakes together with their location shown on OS Maps, while Part 2 provides a photographic database which can be developed as new ponds are added to the database or existing ponds are restored/regenerated. Not all of our ponds are acces-

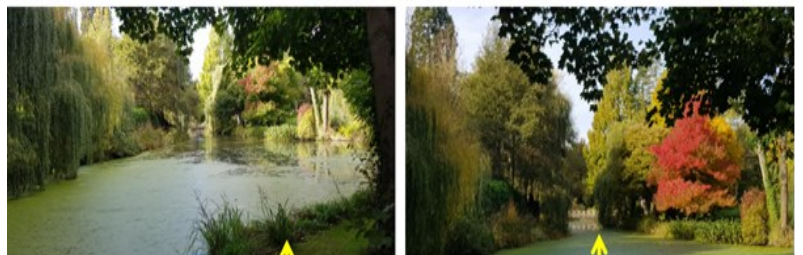
sible to the public, and we welcome photographs of ponds that are not yet on our database.

Many of our ponds are over 100 years old and but some ancient ponds, shown on the 1875 map, are no longer with us e.g. near Wellhouse Rd junction, Snowerhill Farm, on the north side Wellhouse Lane, Stroodgreen Farm and Wonham Manor.

Naturally occurring ponds are often located in topographic depressions where the ground intersects the water table or at or near a spring line (e.g. Buckland Village pond).



Other ponds have been created by damming streams, for example two dams along the Sloughs Brook, before it enters the River Mole have created two large ponds that run parallel to The Street in Betchworth (right).

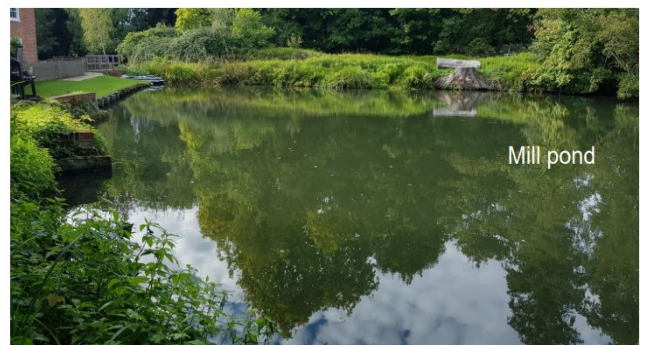
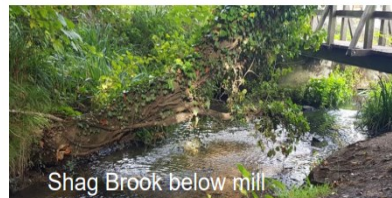


Further north, Slough Brook was dammed near the Red Lion Pub creating a pond that once stretched 300m NE along the line of the brook. Part of the dam was demolished in the 1970s and only a small shallow pond and wetland area remains.

Similarly, in ancient (Saxon?) times, Shag Brook was dammed to create the mill pond at Wonham (right).

Buckland has several large lakes – the 50 acre Buckland Park Lake and smaller Taplow Lakes which now provide sport (commercial fishing, paddle boarding) and leisure facilities. The lakes were produced through the quarrying of high quality silica sands between 1955-1990.

When quarrying ceased, lakes formed naturally in the depressions that were below the water table as the Lower Greensand is a natural aquifer. Watch our pond movie on our YouTube Channel <https://www.youtube.com/watch?v=MAIQ97nrK7A>



Garden Ponds

Our caring for our natural water project is entering its next stage when we want to encourage the restoration of ponds that have been neglected and the creation of new ponds.

Creating, maintaining or restoring a pond, however small, is the most useful things we can do to create new habitats for plants and animals. We want to find out just how many residents of Betchworth

already have a pond in their garden. We will then set out to encourage the regeneration of existing ponds and the creation of new ponds. Our intention is to help anyone who would like to create a small pond.



We will be hosting a zoom meeting in April to consider how best we can achieve this goal. If you would like to be involved in any of the activities associated with our Caring for Our Water Project, please get in touch with Norman – lifewider@gmail.com or Deb - coombecott@hotmail.co.uk.

We Love Our Jubilee and Apple Trees

Two ways to ensure a bumper apple crop: You could go in for a spot of wassailing!

About this time of year, we could gather as a group in the village orchard to 'bless' the trees. We'd be toasting them, both by pouring some of the winter warming alcohol essential to such ceremonies around their roots, and also by hanging cider-infused toasted bread in the branches to welcome the good spirits. We'd banish the evil spirits by banging pots and pans and generally making a lot of noise. If that all sounds too much (even without the optional, but seemingly traditional Morris Dancing), you could similarly 'bless' your own trees in the privacy of your own garden.

Or you could learn how to improve your apple crop through better pruning and sign up for this year's mature tree pruning demo and workshop on Friday 10 March 10.00-13.00.

Organised again by Re-Betchworth and led this year by Alessandra Valsecchi (until recently i/c the fruit collection at RHS Wisley, and now working with Albury Vineyard), the action will again be based in the village orchard off Goulburn Green (above). After a run-through of the theory behind apple tree pruning, Ales will choose one of the orchard trees and demonstrate best practice. Working in small teams, attendees will then propose and action the work needed on the remaining trees.



The workshop 'sold out' quickly in 2022, so please register your interest now by emailing rebetchworth@gmail.com To partly offset the tutor's fee, we'll be charging £10 a head for this year's workshop.

Progress on the 70 Jubilee Trees

Knight's Garden Centre report that just over half of the Jubilee Tree Vouchers have now been redeemed, with Acers and Apple Trees leading the popularity stakes. Our thanks to those who have fulfilled their pledge and sent a photo and description for Norman at lifewider@gmail.com to upload onto our tree map. We may ask again in the summer, as few look very interesting when bare-leaved. Don't delay long if you are still sitting on your voucher and undecided about your tree choice – the planting season will end before you know it, and the later you leave it, the more TLC your tree will need in the coming summer.



Escalating Energy Costs: Investing to keep them in check

While Re-B has mostly focused on work to enhance local biodiversity our good neighbours in Buckland have got well ahead with work on carbon emissions. Their 'Low Carbon Network', led by resident Ken Caldwell, holds occasional Zoom teach-ins sharing information on the technologies and practices available to reduce our domestic energy consumption – and save money.

What follows is extracted – with Ken's full blessing – from his recent talk on the Changing Economics of Home Energy. While very few Re-Betchworth supporters would consider that they live in an 'average' house, the percentages and pay-back periods below remain broadly true whatever the size of your house – you'll just need to scale up or down on the 'typical' illustrative costs.

| REDUCING YOUR ENERGY BILLS: EASY WINS | | |
|--|-------------------------|-----------------------------------|
| Potential reductions of >1% of annual average household energy bills without significant investment, at October 22 energy prices | | |
| | Potential Annual Saving | Potential Annual Carbon Saving kg |
| ▶ Draught proof doors/windows/chimneys | £150 | 250-300 |
| ▶ Close curtains/blinds at night | £ 90 | 150-200 |
| ▶ Upgrade hot water tank insulation | £ 80 | 140-180 |
| ▶ Turn thermostat down 1 degree | £ 80 | 140-180 |
| ▶ Air dry clothes (not tumble dry) | £ 70 | 50-70 |
| ▶ Switch off stand-by power on appliances | £ 65 | 45-65 |
| ▶ LED light bulbs | £ 60 | 40-60 |
| ▶ Wash clothes on cold wash | £ 35 | 25-45 |

Source: Energy Saving Trust, assumes gas space and water heating

The background to all this is the dramatic increase in energy costs: from £1,250 a year per household last winter to £3,500 now. Typically, 62% of that cost is for home heating and 18% for hot water, with the remaining 20% going on clothes washing, fridges and freezers, TVs etc and, lighting and cooking. The talk suggested that there might be some easy wins and went on to look at investing for greater impact.

In the discussion that followed, spending money on increasing the insulation

in all our roofs came through as the no-brainer, with cavity wall insulation as a strong secondary action.

| REDUCING YOUR ENERGY BILLS & EMISSIONS | | | |
|---|---------------------------|----------------|-----------------------|
| INVESTING FOR GREATER IMPACT | | | |
| Average detached or semi-detached house, Oct 22 energy prices | | | |
| | Typical Installation Cost | Payback Period | CO2 reduction (kg pa) |
| REDUCING HEAT LOSS: | | | |
| ▶ Wall insulation: Cavity Wall | £1000-2000 | 2-3 years | 700-1200 |
| ▶ Wall insulation: Solid Wall | £8000-20000 | 15-20 years | 1000-1500 |
| ▶ Roof insulation: from none | £500-650 | 1-2 years | 600-1000 |
| ▶ Roof insulation: from 120mm | £400-600 | 8-12 Years | 50-100 |
| ▶ Floor insulation | £1500-3000 | 12-18 years | 200-300 |
| ▶ Double glazing | £5000-10,000 | 30-35 years | 300-400 |
| GENERATING ALTERNATIVE ENERGY: | | | |
| ▶ Renewable heating (heat pump)* | £2000-8000 (net) | 5-20 years | 2000-3000 |
| ▶ Solar panels | £4000-7000 | 10-15 years | 700-900 |
| ▶ Solar water heating | £3000-5000 | 20-30 years | 250-350 |

Source: Energy Saving Trust
* Air source heat pump savings compared to old gas boiler, with Renewable Heat Incentive

End note: Buckland Low Carbon Network talks have ranged from installing heat pumps, to PV arrays and battery storage, to using electric cars (and bicycles) and more. Betchworth residents are welcome to join all these discussions, so please email kencaldwell02@gmail.com if you'd like to be alerted to future talks.

Thank You Cathy & Welcome Sue

Maybe it is because she's a dedicated grow-your-own enthusiast, or maybe because she loves animals, but a quick check through The Forum archives (yes our very own Betchworth WhatsApp channel) confirms that Cathy Honey is the village lost dog heroine.

It seems that her allotment by the burial ground is the perfect place to spot strays. But Cathy is an unsung heroine in other ways too, not least as the volunteer who set up the Re-Betchworth Website www.re-betchworth.org in early 2021 and has maintained it ever since.

As with so many others who first 'surfaced' on The Forum during the initial 2020 lockdown, Cathy, with husband Gary and son James (a Brockham Badgers regular), had lived quietly in the village since 2002. She works for the charity Tearfund in the Internal Comms Team, and when Re-B appealed for help she stepped forward to offer her considerable skills and experience to build a web-based resource to underpin our actions and mission.

Cathy has done a tremendous job in giving us a presence on the internet that we are proud of and provides an abundance of useful resources. The whole Re-B team is indebted to her for that and we all wanted to take this opportunity to say a great big thank you as she takes a step back to focus more fully on her ageing mother.

As we start our third year of voluntary work we are now a formally constituted charity, and the ways we communicate have multiplied - as witnessed by this e-magazine, our biodiversity website and our Tube nature movies. So it makes sense to re-think our website in the context of our other communication channels and we are delighted that Sue Chamberlain has stepped up to take over from Cathy and lead this work. Watch this space!



Artistic Appreciation of Nature

Talented artist and RE-B team member Milla Peterkin is in the news. Her painting 'Autumn View of Denbies' won the public vote for most popular painting at Dorking Art Group's December exhibition at Denbies. Camilla said it was painted from a photo taken last autumn that captured the beauty of nature and our lovely Surrey Hills. If you paint nature and you would like to share your creations please send a photo to lifewider@gmail.com



Resources & Links

Resources Hub <https://www.re-betchworth.org/>

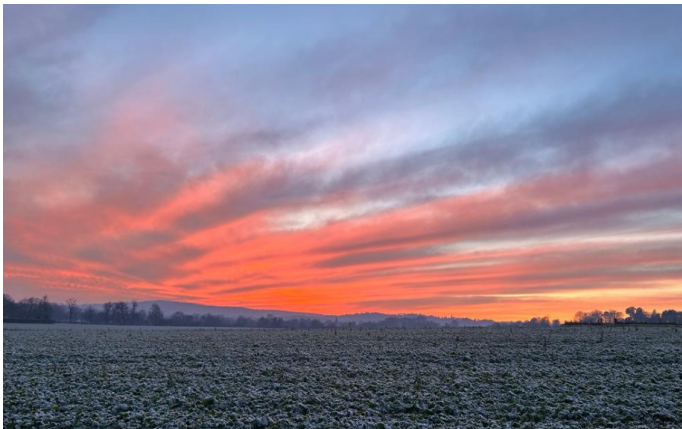
Biodiversity Project <https://rebetchworth.weebly.com/>

YouTube channel <https://www.youtube.com/@RE-Bmovies>

We value your feedback on our magazine and all these channels. How useful/inspiring are they? Why do you visit them and what would make you visit them more? How can they be improved? Please email any comments and suggestions to the Editor James Benn rebetchworth@gmail.com

Winter Gallery

This issue of the magazine is published in winter and our photo gallery reflects the cold snap we had just before Christmas when the ground was covered in frost and snow for over a week. January also provides us with stunning sunrises and sunsets. We include here two photos shared on the village Forum , the stunning sunset by Corky and St Michaels Church by Pam. Please email your photographs for inclusion in our spring gallery in the April issue of the magazine to Norman Jackson lifewider@gmail.com



Winter Gallery <https://www.youtube.com/watch?v=UYCPBQSLomk>

